

# OPTISLIDES™

RIGOROUS, RELIABLE, REPRODUCIBLE

TISSUE: MOUSE BRAIN, 6-CHANNEL

## Check & Validate:

- Filter sets & camera settings
- Image registration in x, y & z
- Chromatic integrity
- Depth penetration

## System Usage:

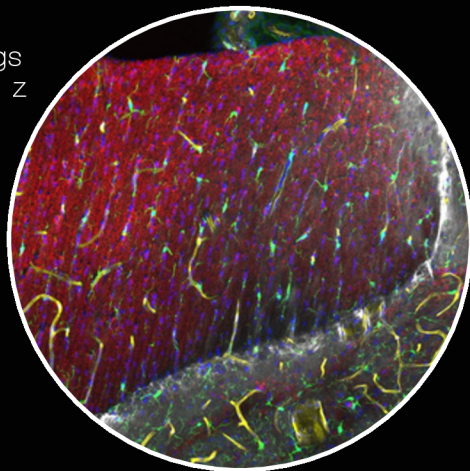
- Confocal Microscopes
- Widefield
- Near Infrared

## Mounting:

- #1.5 Coverslips
- Vectashield™ Plus

## Dye/Reagent Licensors:

- Biotium
- Millipore Sigma
- Cedarlane
- Vector Labs

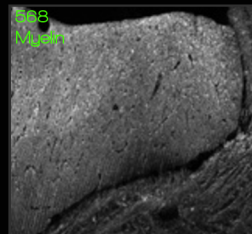
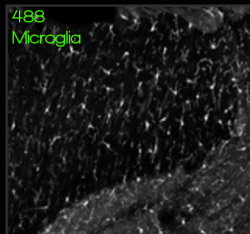
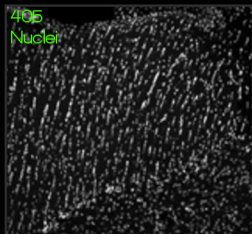


*Imaged using Confocal Microscopy  
20X Objective Lens*

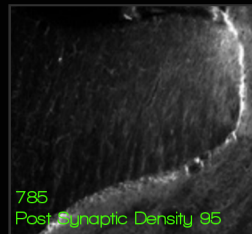
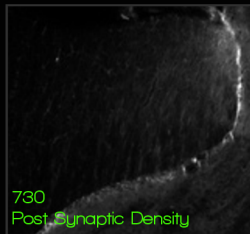
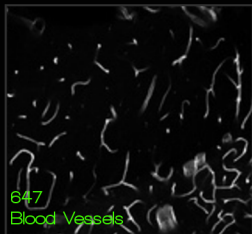
Composite pseudo coloured: Blue (Blue),  
Green (Green), Red (Red), Far Red (Yellow),  
NIR 730 and NIR 785 (Grey)

# TISSUE: MOUSE BRAIN

# 6-CHANNEL



Channel	Ex Laser	Primary	Label/Secondary	Ex / Em
Blue	405	None	DAPI	358 / 461
Green	488	IBA-1	DARb-CF® 488A	490 / 516
Red	568	MBP	DAR-CF® 568	562 / 584
Far Red	647	None	LEL- CF® 640R	642 / 663
NIR 730	730	PSD 95	DAM-CF® 790	784 / 806
NIR 785	785			



MADE IN CANADA



Corporate:  
Suite 1440  
246 Stewart Green SW  
Calgary, AB T3H 3C8  
Canada

